

ECH

Stainless Steel Horizontal Multistage Pump



Application

- It is applicable to household water supply, equipment support, pipeline pressurization, garden watering, vegetable greenhouse watering, fish farming and poultry raising, industrial and mining, water supply and drainage of enterprises and high-rise buildings, central air conditioner and centralized heating circulation system, etc.

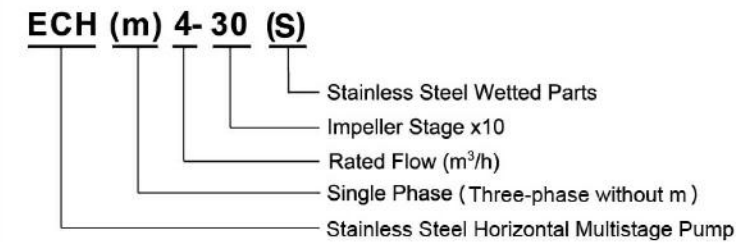
Pump

- AISI 304 shaft
- Max. liquid temperature: +85°C
- Altitude: up to 1000 m
- Max. suction: 8 m
- Max. inlet pressure: limited by max. operating pressure
- Max. operation pressure: 10 bar
- Liquid PH value: 4 - 10

Motor

- Motor with copper winding
- Built-in thermal protector for single phase motor
- Insulation class: F
- Protection class: IP55
- Max. ambient temperature: +40°C

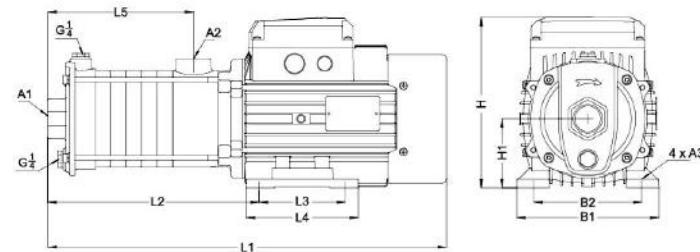
Identification Codes



Technical Data

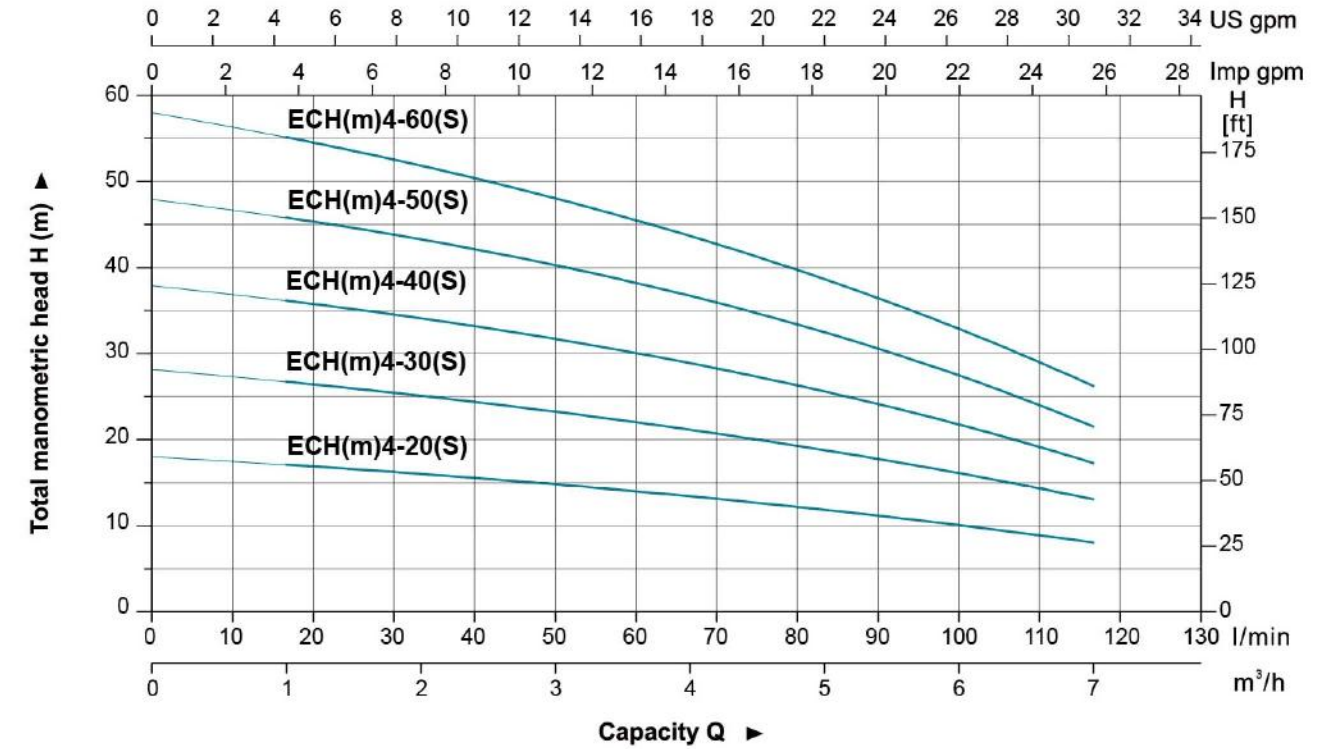
Model	Power		Q (m ³ /h) Q (l/min)	1	2	3	4	5	6	7
	kW	HP		H (m)	17	33	50	67	83	100
ECH(m)4-20(S)	0.55	0.75	H (m)	17	16	15	13	12	10	8
ECH(m)4-30(S)	0.55	0.75		27	25	23	21	19	16	13
ECH(m)4-40(S)	0.75	1.0		36	34	32	28	26	22	17
ECH(m)4-50(S)	1.1	1.5		46	43	40	36	33	28	21
ECH(m)4-60(S)	1.1	1.5		55	52	48	43	39	33	26

Dimension



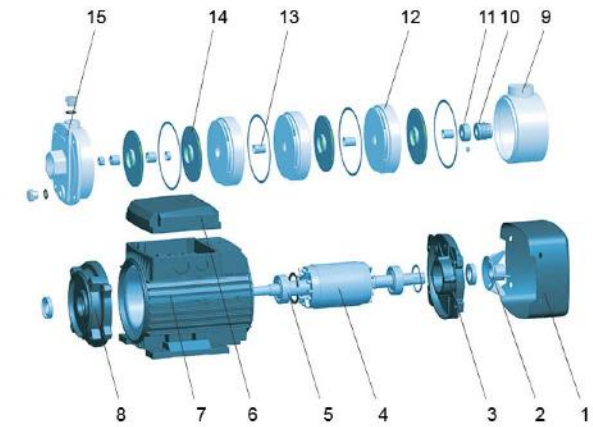
Model	L1	L2	L3	L4	L5	B1	B2	H	H1	A1	A2	A3
ECH(m)4-20(S)	354	175.5	90	110	108.5	137	109	176.5	71	G1 $\frac{1}{2}$	G1	Φ7
ECH(m)4-30(S)	381.5	203	90	110	136	137	109	176.5	71	G1 $\frac{1}{2}$	G1	Φ7
ECH(m)4-40(S)	408.5	230	90	110	163	137	109	176.5	71	G1 $\frac{1}{2}$	G1	Φ7
ECH(m)4-50(S)	484	266	100	130	190	165	125	204.5	80	G1 $\frac{1}{2}$	G1	Φ10
ECH(m)4-60(S)	511.5	293.5	100	130	217.5	165	125	204.5	80	G1 $\frac{1}{2}$	G1	Φ10

Hydraulic Performance Curves



Materials Table

No.	Part	Material
1	Fan cover	08F
2	Fan	PP
3	Rear cover	ZL 102
4	Rotor	
5	Bearing	
6	Terminal box	ZL 102
7	Stator	
8	Front cover	Cast iron
9	Outlet body	Cast iron
10	Mechanical seal	Sic/Carbon
11	Positioning sleeve	AISI 304
12	Diffuser	AISI 304
13	Sleeve	AISI 304
14	Impeller	AISI 304
15	Pump body	Cast iron



Package Information

Model	GW (Kgs)	L (mm)	W (mm)	H (mm)	Quantity (PCS/20 TEU)
ECH(m)4-20(S)	13.1	420	215	243	1215
ECH(m)4-30(S)	13.6	420	215	243	1215
ECH(m)4-40(S)	14.7	455	215	243	1170
ECH(m)4-50(S)	21.5	548	235	268	800
ECH(m)4-60(S)	22	548	235	268	800

