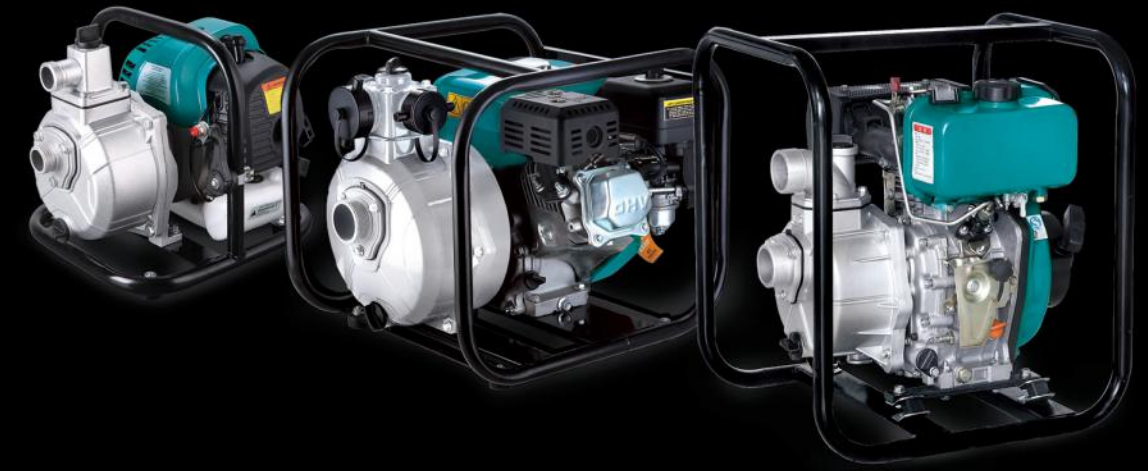


شرکت فن آوران تهویه پیام  
نماینده رسمی و انحصاری فروش و خدمات پس از فروش محصولات لیو در ایران



## Pumps

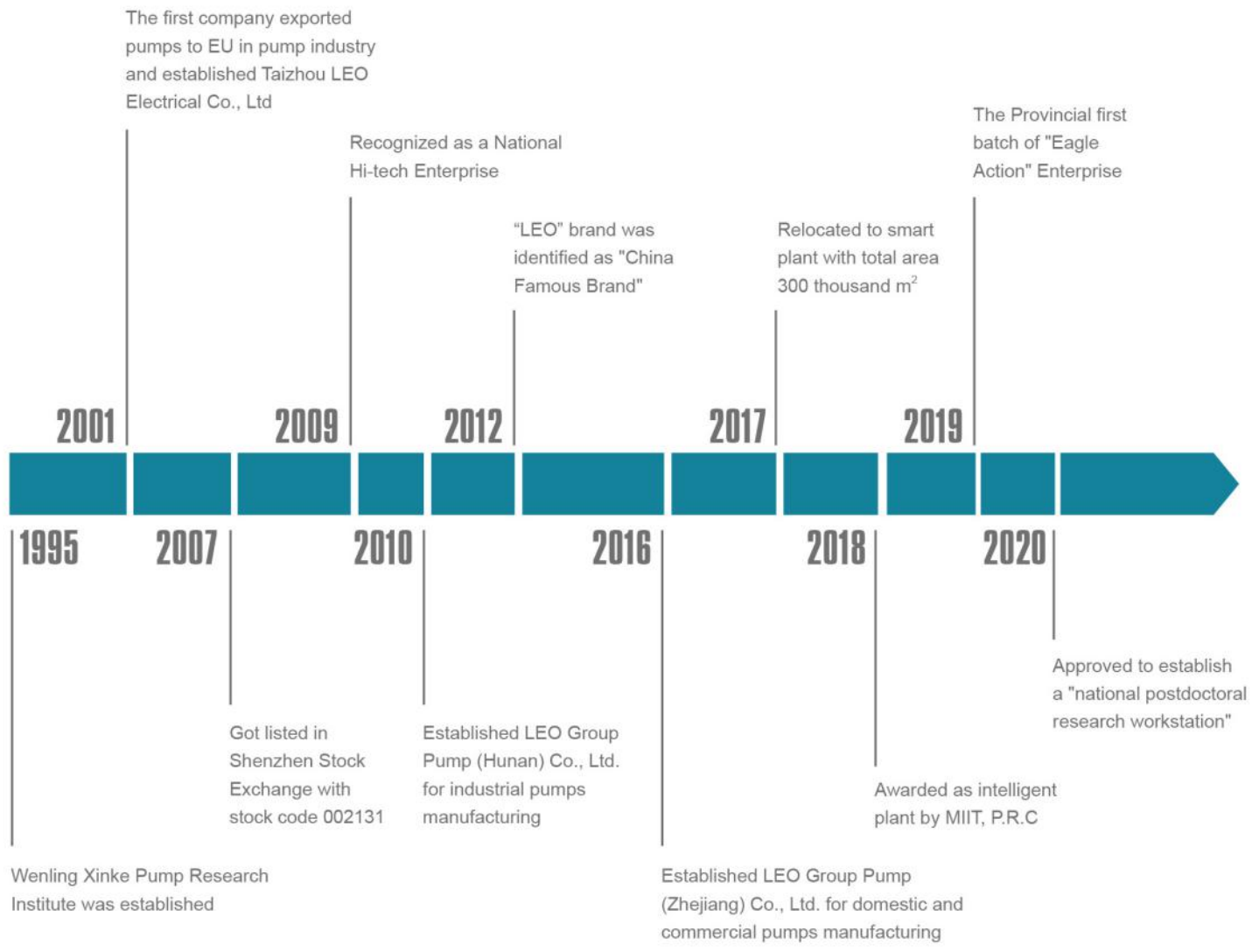
- Gasoline Water Pump
- Gasoline Sewage Pump
- Gasoline Cast Iron Centrifugal Pump
- Diesel Water Pump
- Gasoline Trash Pump
- Horizontal Engines



# HISTORY



شرکت فن آوران تهويه پیام  
نماینده رسمی و انحصاری فروش و خدمات پس از فروش محصولات لیو در ایران



# TO KNOW LEO



**1<sup>st</sup>** LISTED PUMP MANUFACTURER

**850** ENGINEERS AND **4000** EMPLOYEES IN TOTAL

GLOBAL AUTHORIZED DISTRIBUTOR OVER **140** COUNTRIES AND REGIONS

MORE THAN **15,000** SALES OUTLETS SERVED OVER **500** MILLION USERS

OVER **6,000,000** PUMPS PRODUCED YEARLY



## NUMEROUS MEMBERS, ONE FAMILY

Based on market segment, LEO's pump business is divided into 5 fields, namely water conservancy & water resources, power station, petrochemical industry, mining & metallurgical industry and civilian applications. For each field there's a professional manufacturing base with relevant professional sales teams. Two pump manufacturing bases, LEO Group Pump (Hunan) and Dalian LEO Pump are all well-known industrial pump manufacturers in their own fields. With over 70 years' industrial pump manufacturing experience and extraordinary comprehensive strength, LEO has become a leading company among all industrial pump manufacturers in China.

### Pump Manufacturing Base for Domestic and Commercial Applications (Wenling City, Zhejiang Province)



Area: Around 246,666 m<sup>2</sup>

Product scope: Peripheral Pump, Jet Pump, Centrifugal Pump, Garden Submersible Pump, Fountain Pump, Pool Pump, Domestic Lifting Pump, Gasoline Engine Pump, Diesel Engine Pump, Submersible Pump, Submersible Borehole Pump, Submersible Sewage Pump, Stainless Steel Vertical Multistage Pump, etc.

### Pump Manufacturing Base for General Industrial Pumps (Xiangtan City, Hunan Province)



Area: Around 92,635 m<sup>2</sup>

Product scope: Large Mixed Flow And Axial Flow Pump (Vertical, Horizontal, Oblique, Tubular, Submersible etc.), Double-Suction Centrifugal Pump, Multistage Centrifugal Pump, Slurry Pump, Desulphurization Pump And Submersible Centrifugal Pump. Products are mainly used in mine, metallurgy, coal washing, FGD, municipal water etc.

### Pump Manufacturing Base for Petrochemical Industry (Dalian City, Liaoning Province)



Area: Around 10,000 m<sup>2</sup>

Product Scope: Petrochemical Pumps, specializes in R&D, design of pumps of petro chemistry, coal chemical industry, long-distance transport pipes, energy resources, fine chemicals industry, etc. Design and develop software and large laboratories, explore liquid transport schemes under severe conditions and solve the difficult projects of ultralow temperature, high temperature high pressure, low cavitation, highly corrosive, energy recovery, etc.



● Peripheral Pump



● Self-Priming Peripheral Pump



● Jet Pump



● Jet Pump for Deep Wells



● Centrifugal Pump



● Multistage Centrifugal Pump



● Self-Priming Centrifugal Pump



● Stainless Steel Multistage Centrifugal Pump



● Stainless Steel Centrifugal Pump



● Submersible Pump



● Stainless Steel Submersible Pump



● Flexible Shaft Pump



● Domestic Lifting Station



● Pool Pump



● Fountain Pump



● Garden Submersible Pump



● Garden Jet Pump



● Garden Pressure System



● Petrol Lawnmowers



● Gasoline Pressure Washers



● Booster Pump/Circulation Pump



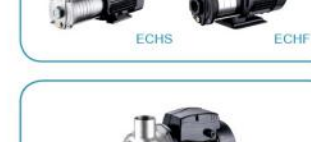
● Wall-Mounted Gas Boiler Pump



● Stainless Steel Horizontal Multistage Pump



● Stainless Steel Horizontal Multistage Pump



● Semi-open Impeller Stainless Steel Centrifugal Pump



● Intelligent Pressure Booster System



● Permanent Magnet Intelligent Booster



● Standard Centrifugal Pump



● Stainless Steel Standard Centrifugal Pump



● Submersible Sewage Pump



● Submersible Sewage Pump



● Submersible Dewatering Pump



● Submersible Slurry Pump



● Vertical In-line Pump



● Stainless Steel Vertical Multistage Pump



● Pressure Booster System



● End Suction Centrifugal Pump



● Gasoline/Diesel Water Pump



● Generators



● Submersible Borehole Pump



● Solar Submersible Pump Systems



### Application

- To transfer clean water with liquid temperature between 0°C and 40°C
- Applicable in water supply and drainage for factories, mines, municipal facilities as well as field irrigation, etc.

### Features

- New unique design with ergonomic feature
- Portable and compact pump frame
- High quality engine with excellent performance and long service life
- Impeller designed with high efficient hydraulic system
- Low fuel consumption

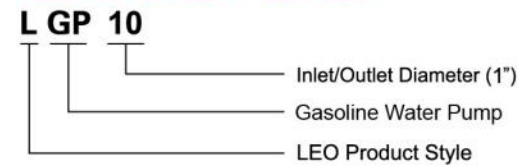
### Pump

- Anti-rust cast iron impeller and diffuser
- Max. Suction: 8 m , Suck 5 m needs 120 s
- Inlet/outlet: 25 mm/38 mm

### Engine

- Single cylinder, 2-stroke, Air-cooled
- Max. power: 1.6 HP
- Rated speed: 7500rpm
- Mixture ratio of fuel: 1:25 (2-stroke engine oil and 90 octane gasoline or higher)

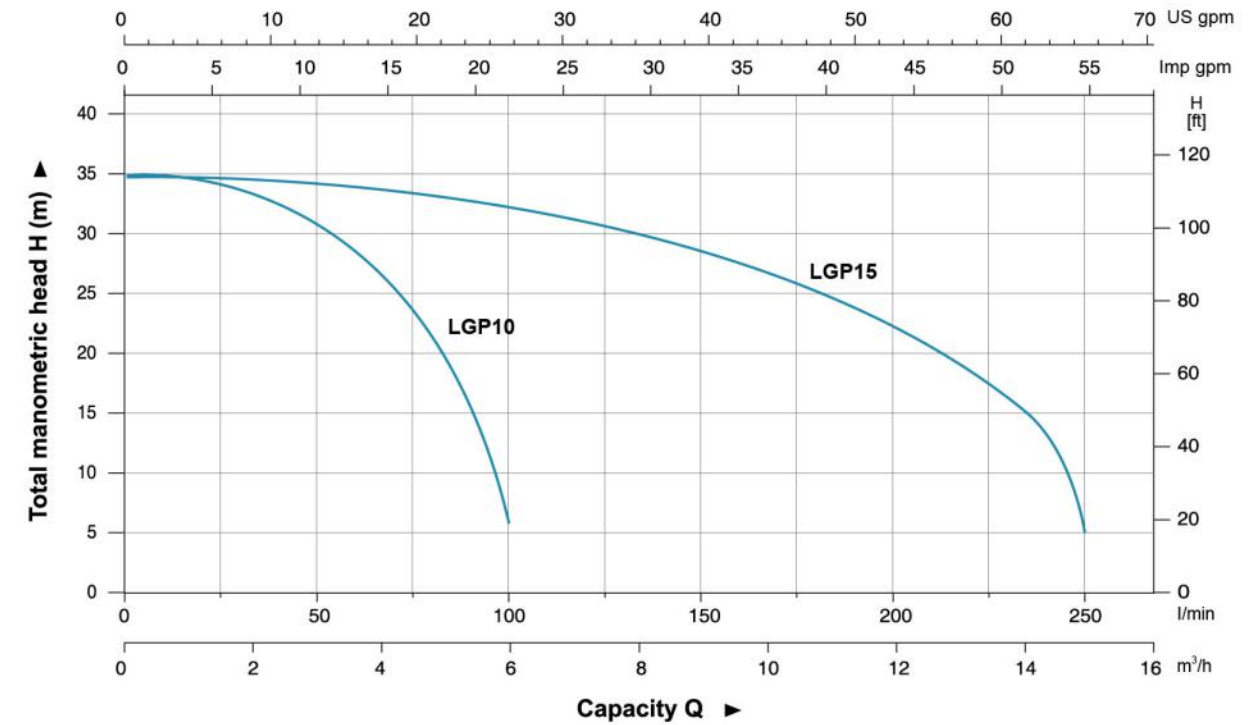
### Identification Codes



### Technical Data

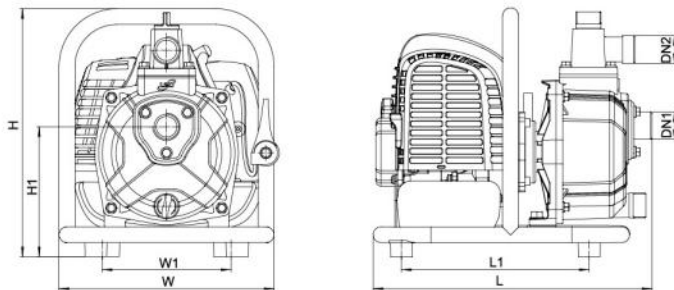
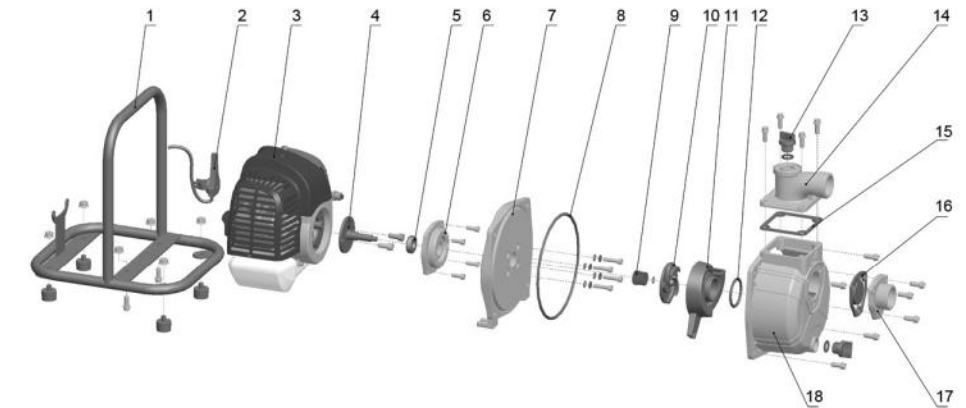
Model	Power HP	Mixed Fuel tank L	Displacement cc	Engine	Q (m³/h)									
					0	2	4	6	8	10	12	14	15	
LGP10	1.6	1	42.7	G43	35	32.5	26.9	6	-	-	-	-	-	-
LGP15	1.6	1	42.7	G43	35	34.5	34	33	30	27.5	23.5	15	5	

### Hydraulic Performance Curves



### Materials Table

No.	Part	Material
1	Frame	Steel
2	Throttle trigger	
3	Engine	
4	Crankshaft	
5	Bearing	
6	Seat connection	Aluminum
7	Pump cover	Aluminum
8	O-ring	NBR
9	Mechanical seal	Carbon/Ceramic
10	Impeller	HT200
11	Diffuser	HT200
12	O-ring	NBR
13	Plug	PP
14	Outlet	Aluminum
15	Seal	NBR
16	Non-return valve	NBR
17	Inlet	Aluminum
18	Pump body	Aluminum



### Dimension

Model	DN1	DN2	L (mm)	W (mm)	H (mm)	L1 (mm)	W1 (mm)	H1 (mm)
LGP10	1"	1"	336	279	300	217.5	155	157
LGP15	1 1/2"	1 1/2"	344	279	345	233	175	180

### Package Information

Model	GW (Kgs)	L (mm)	W (mm)	H (mm)	Quantity (PCS/20 TEU)
LGP10	6.84	350	290	325	702
LGP15	8.27	355	290	370	681





### Application

- To transfer clean water with liquid temperature between 0°C and 40°C
- Application in water supply and drainage for factories, mines, municipal facilities as well as field irrigation, etc.

### Features

- 4-stroke gasoline engine power performance, structural optimization and upgrading
- Ignition more convenient, more complete combustion, low energy consumption, more environmentally friendly
- Strengthened pump body ensures more durable and reliable service
- Better sealing effect by using special mechanical seal
- Impeller designed with high efficient hydraulic system

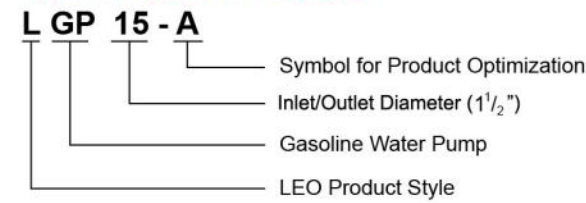
### Pump

- Anti-rust cast iron impeller and diffuser
- Max.Suction: 8 m , Suck 5 m needs 120 s
- Inlet/outlet: 25 mm , 38 mm

### Engine

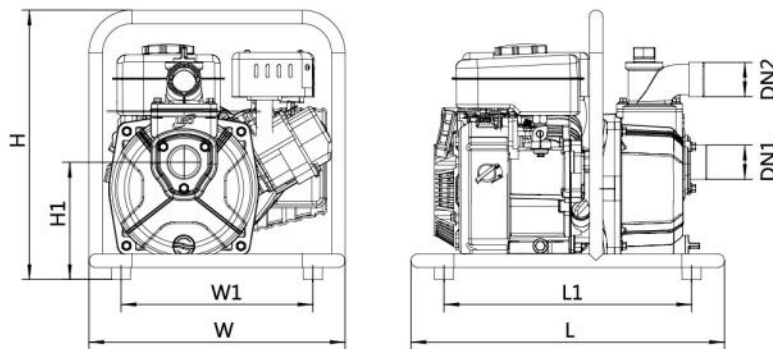
- Single cylinder, 4-stroke, Air-cooled
- Max.power: 3 HP
- Rated speed: 3600 rpm

### Identification Codes



### Technical Data

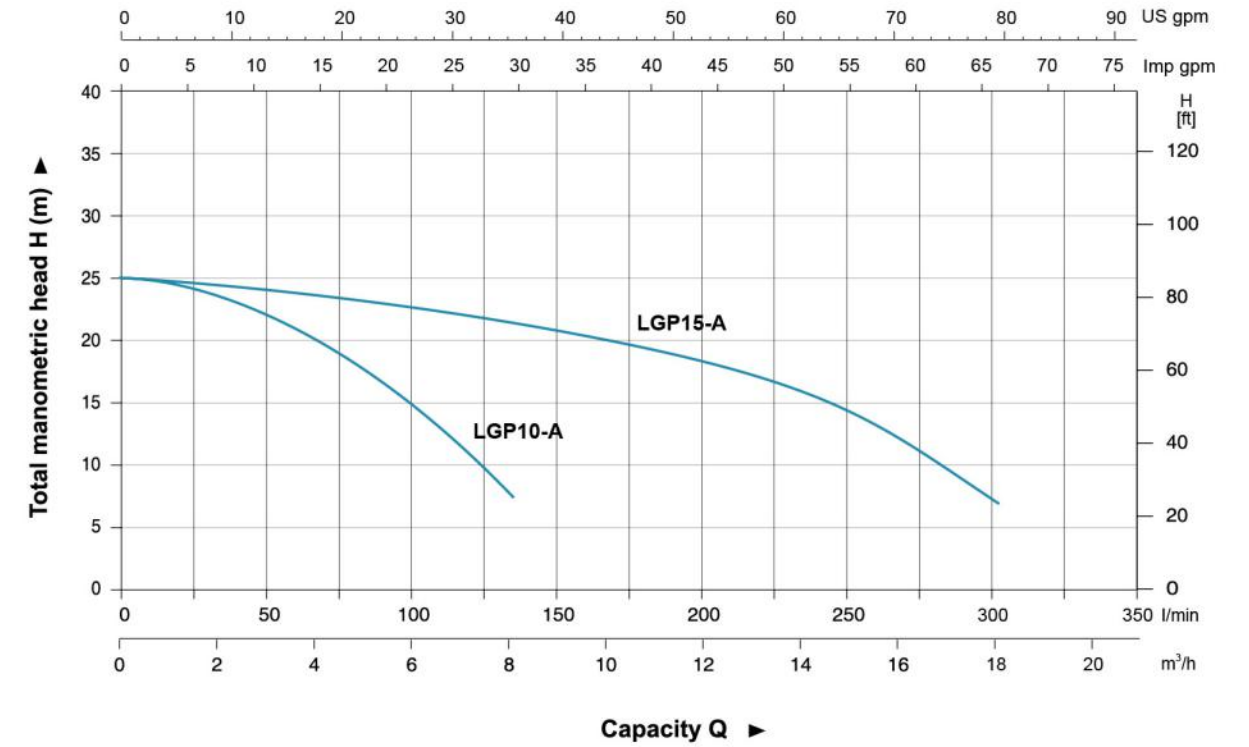
Model	Power HP	Fuel tank L	Engine oil L	Displacement cc	Engine	Q (m³/h)										
						0	2	4	6	8	10	12	14	16	18	
LGP10-A	3	1.8	0.35	79	G79	25	24	20.2	15	7.5	-	-	-	-	-	
LGP15-A	3	1.8	0.35	87	G87	25	24.5	24	23	22	20	17	15	12	7.2	



### Dimension

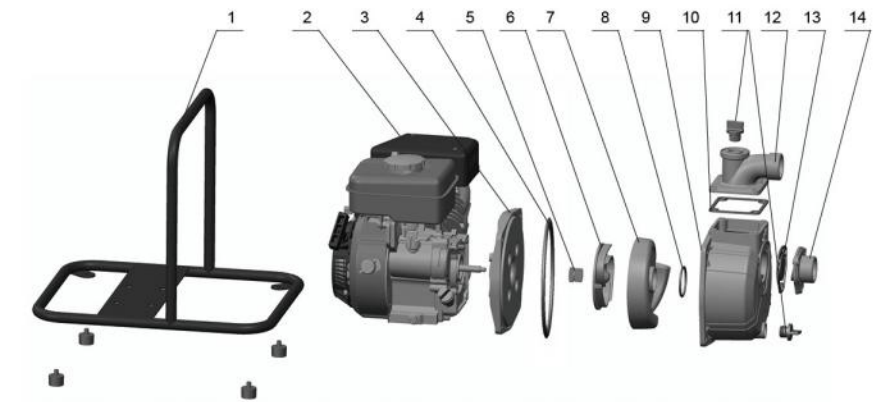
Model	DN1	DN2	L (mm)	W (mm)	H (mm)	L1 (mm)	W1 (mm)	H1 (mm)
LGP10-A	1"	1"	438	380	377	346	268	158
LGP15-A	1 1/2"	1 1/2"	438	380	377	346	268	164.2

### Hydraulic Performance Curves



### Materials Table

No.	Part	Material
1	Frame	Steel
2	Engine	
3	Pump cover	Aluminum
4	O-ring	NBR
5	Mechanical seal	Carbon/Ceramic
6	Impeller	HT200
7	Diffuser	HT200
8	O-ring	NBR
9	Pump body	Aluminum
10	Seal	NBR
11	Plug	PP
12	Outlet	Aluminum
13	Non-return valve	NBR
14	Inlet	Aluminum



### Package Information

Model	GW (Kgs)	L (mm)	W (mm)	H (mm)	Quantity (PCS/20 TEU)
LGP10-A	13	464	378	400	330
LGP15-A	14.5	464	378	400	330





**Application**

- To transfer clean water with liquid temperature between 0°C and 40°C
- Application in water supply and drainage for factories, mines, municipal facilities as well as field irrigation, etc.

**Features**

- Strengthened pump body ensures more durable and reliable service
- Better sealing effect by using special mechanical seal
- Multiple direction outlet for convenient use
- Improved starter handle for easier starting
- 20% increased loading quantity thanks to new frame structure
- Less gasoline consumption
- Powerful, durable LEO engine

**Pump**

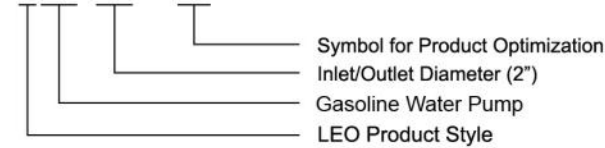
- Anti-rust cast iron impeller and diffuser
- High quality forged steel crankshaft
- Max.Suction: 8 m , Suck 5 m needs 120 s
- Inlet/outlet: 50 mm/80 mm

**Engine**

- Single cylinder, 4-stroke, Air-cooled
- Max.power: 6.5 HP
- Rated speed: 3600 rpm
- Reliable engine equipped with low engine oil shut off system

**Identification Codes**

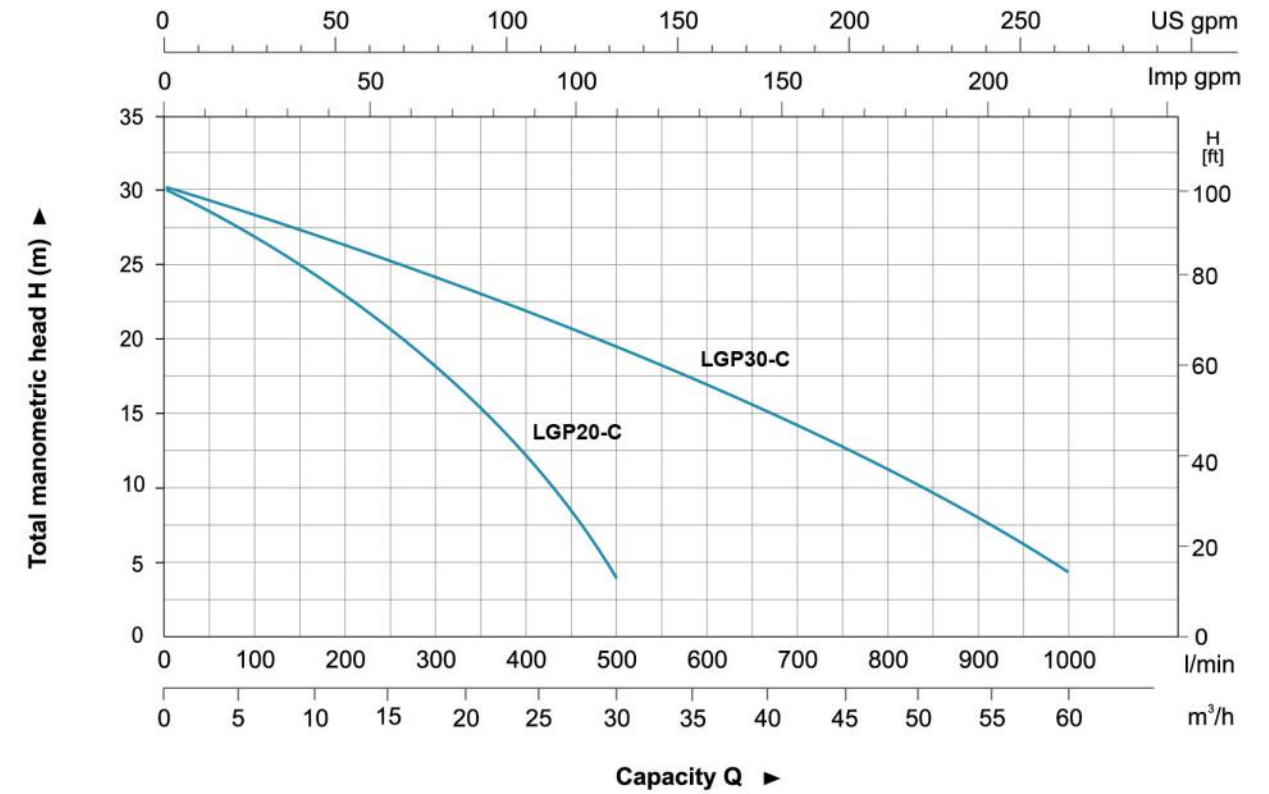
LGP 20 - C



**Technical Data**

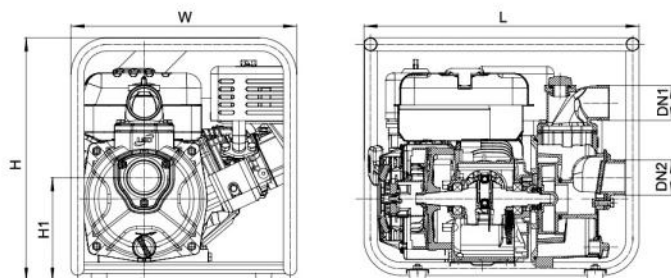
Model	Power HP	Fuel tank L	Engine Oil L	Displacement cc	Engine	Q (m <sup>3</sup> /h)													
						0	5	10	15	20	25	30	35	40	45	50	55	60	
LGP20-C	6.5	2.8	0.55	196	G200	Q (l/min)	0	83.3	166.7	250	333.3	416.7	500	583.3	666.7	750	833.3	916.7	1000
LGP30-C	6.5	2.8	0.55	196	G200	H (m)	30	28	24.5	21	16	10.5	3.5	-	-	-	-	-	-

**Hydraulic Performance Curves**



**Materials Table**

No.	Part	Material
1	Frame	Steel
2	Gasoline engine	
3	Pump cover	ADC12
4	O-ring	NBR
5	Mechanical seal	Carbon/Ceramic
6	Impeller	Cast iron
7	Diffuser	Cast iron
8	O-ring	NBR
9	Pump body	Aluminum
10	Gasket	NBR
11	Outlet	Aluminum
12	Filling plug	PA6
13	Non-return valve	NBR
14	Inlet	Aluminum



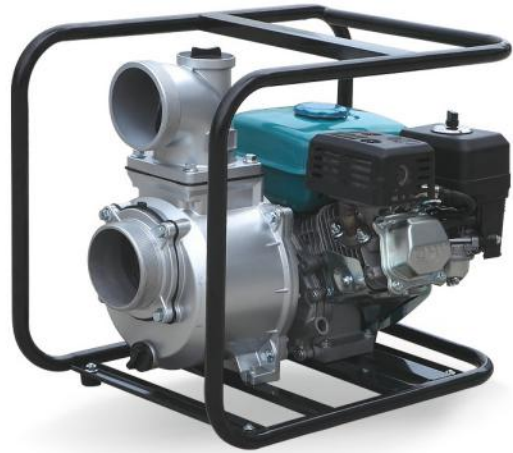
**Dimension**

Model	DN1	DN2	L (mm)	W (mm)	H (mm)	H1 (mm)
LGP20-C	2"	2"	460	375	403.5	181
LGP30-C	3"	3"	500	375	425.5	189

**Package Information**

Model	GW (Kgs)	L (mm)	W (mm)	H (mm)	Quantity (PCS/20 TEU)
LGP20-C	21.5	475	390	425	365
LGP30-C	23	515	390	447	335





### Application

- To transfer clean water with liquid temperature between 0°C and 40 °C
- Application in water supply and drainage for factories, mines, municipal facilities as well as field irrigation, etc.

### Features

- Flexible multi-directional discharge
- Durable steel frame
- Compact for easy carrying
- Quiet and reliable engine
- Low emission and fuel consumption

### Pump

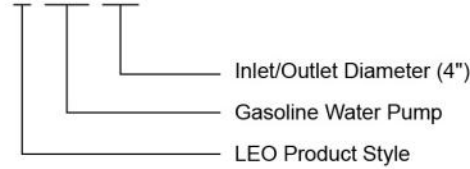
- Cast iron impeller and cast aluminum housing for long life time
- Max. suction: 8 m, suck 5 m needs 120 s
- Inlet/outlet: 100 mm

### Engine

- Single cylinder, 4-stroke, Air-cooled
- Max. power: 6.5 HP
- Rated speed: 3600 rpm
- Reliable engine equipped with low engine oil shut off system

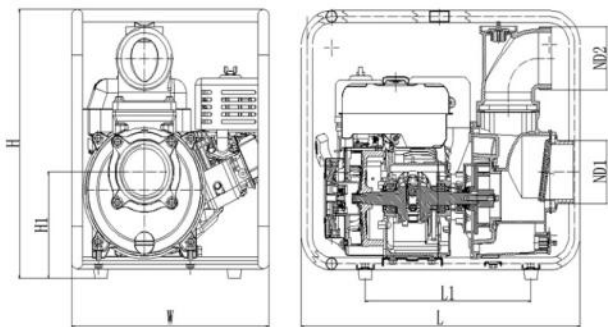
### Identification Codes

**L GP 40**



### Technical Data

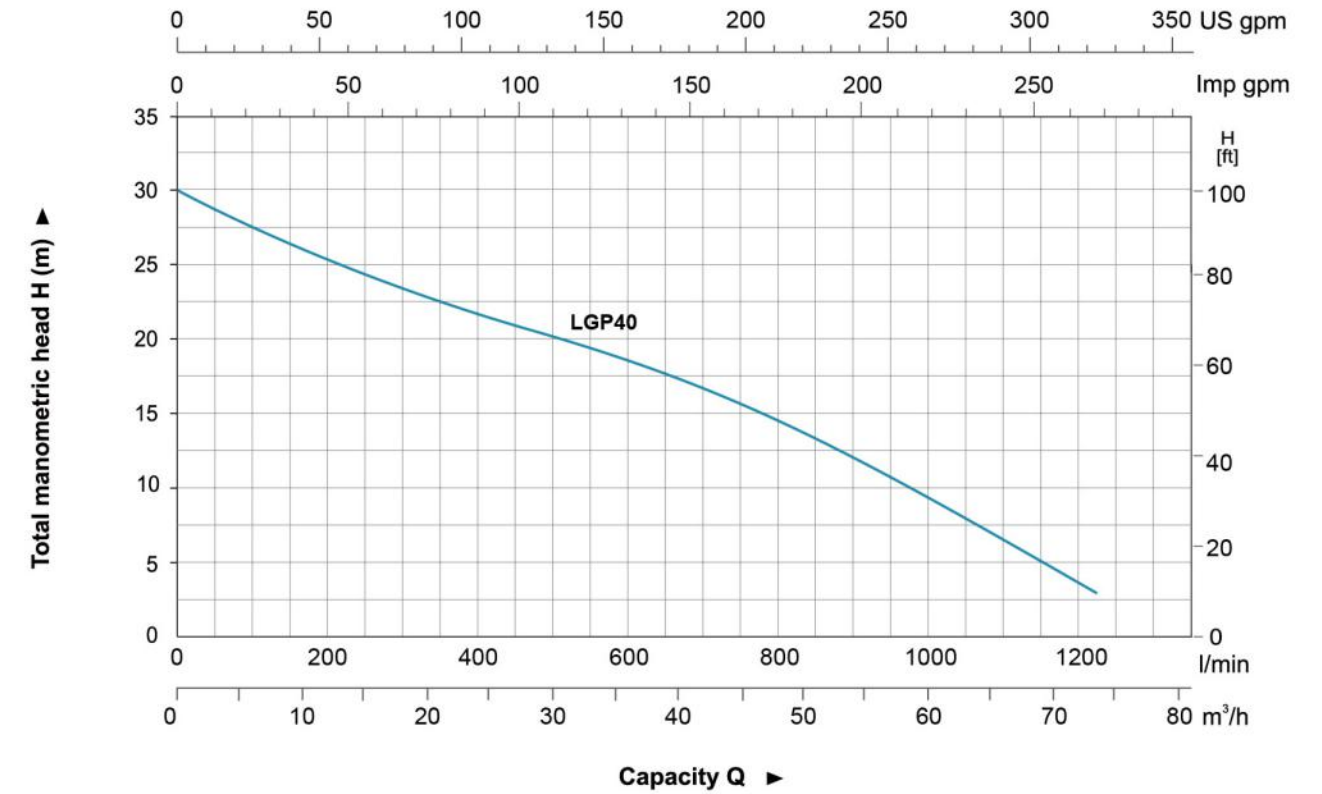
Model	Power HP	Fuel tank L	Engine Oil L	Displacement cc	Engine	Q (m <sup>3</sup> /h)								
						0	10	20	30	40	50	60	72	
LGP40	6.5	2.8	0.55	196	G200	<b>H(m)</b>	30	26	22.6	20.1	17.1	13.3	9	3.1



### Dimension

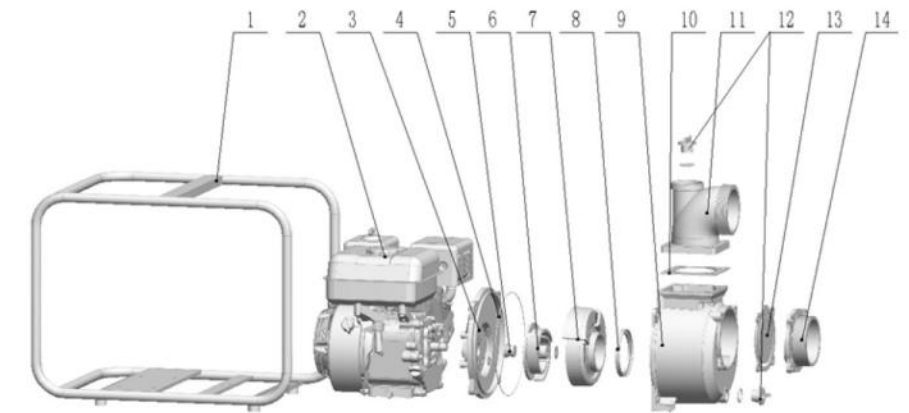
Model	DN1	DN2	L (mm)	W (mm)	H (mm)	H1 (mm)	L1 (mm)
LGP40	4"	4"	555	393	479	190	330

### Hydraulic Performance Curves



### Materials Table

No.	Part	Material
1	Frame	Steel
2	Gasoline engine	
3	Pump cover	ADC12
4	O-ring	NBR
5	Mechanical seal	Carbon/Ceramic
6	Impeller	Cast iron
7	Diffuser	Cast iron
8	O-ring	NBR
9	Pump body	Aluminum
10	Gasket	NBR
11	Outlet	Aluminum
12	Filling plug	PA6
13	Non-return valve	NBR
14	Inlet	Aluminum



### Package Information

Model	GW (Kgs)	L (mm)	W (mm)	H (mm)	Quantity (PCS/20 TEU)
LGP40	24.3	570	400	490	232







LGP20-B  
LGP30-B HONDA

LGP20-2B  
LGP30-2B

### Application

- To transfer clean water with liquid temperature between 0°C and 40°C
- Application in water supply and drainage for factories, mines, municipal facilities as well as field irrigation, etc.

### Features

- Strengthened pump body ensures more durable and reliable service
- Better sealing effect by using special mechanical seal
- 5-direction outlet for convenient use
- Improved starter handle for easier starting
- 20% increased loading quantity thanks to very compact design
- Less gasoline consumption

### Pump

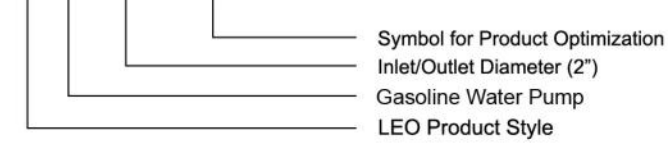
- Anti-rust cast iron impeller and diffuser
- High quality forged steel crankshaft
- Max.Suction: 8 m , Suck 5 m needs 120 s
- Inlet/outlet: 50 mm/80 mm

### Engine

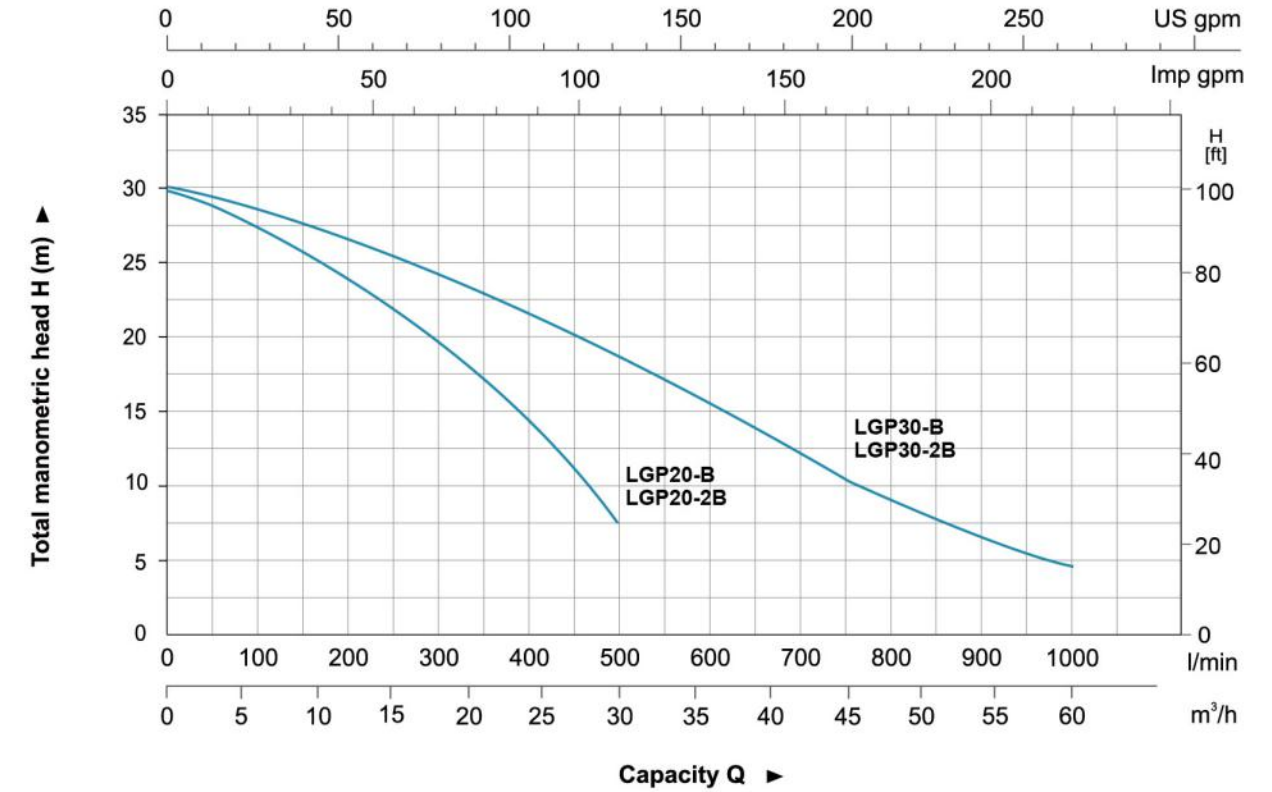
- Single cylinder, 4-stroke, Air-cooled
- Max.power: 5 HP
- Rated speed: 3600 rpm
- Reliable engine equipped with low engine oil shut off system

### Identification Codes

#### L GP 20 - B (2B)



### Hydraulic Performance Curves

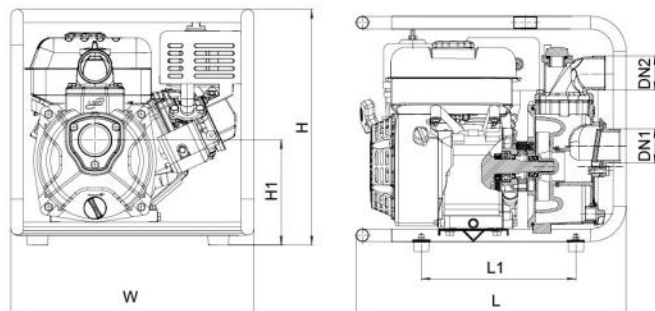
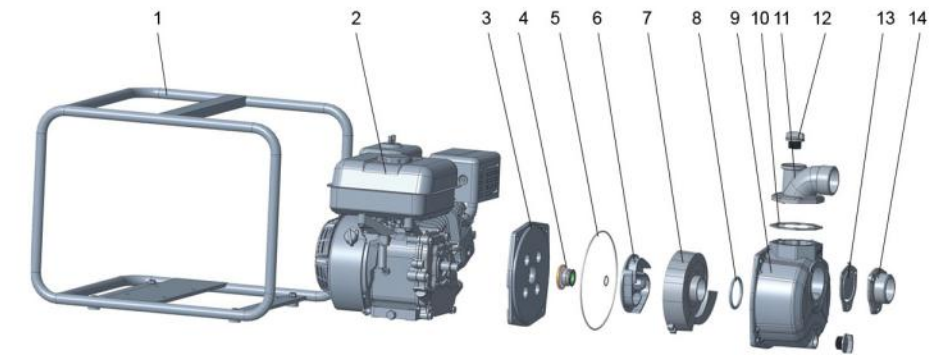


### Technical Data

Model	Power HP	Fuel tank L	Engine Oil L	Displacement cc	Engine	Q (m³/h)											
						0	5	10	15	20	25	30	35	40	45	50	55
LGP20-B	5	2.8	0.58	163	GX160	H (m)											
						30	28.5	25	22	18	14	7.5	-	-	-	-	-
LGP20-2B	5	3.1	0.6	163	XR750	H (m)											
						30	28.5	25	22	18	14	7.5	-	-	-	-	-
LGP30-B	5	2.8	0.58	163	GX160	H (m)											
						30	28.4	27.5	26	24.8	21	19	16.8	14.9	11	9.9	6
LGP30-2B	5	3.1	0.6	163	XR750	H (m)											
						30	28.4	27.5	26	24.8	21	19	16.8	14.9	11	9.9	6

### Materials Table

No.	Part	Material
1	Frame	Steel
2	Gasoline engine	
3	Pump cover	ADC12
4	Mechanical seal	Carbon/Ceramic
5	O-ring	NBR
6	Impeller	Cast iron
7	Diffuser	Cast iron
8	O-ring	NBR
9	Pump body	Aluminum
10	Gasket	NBR
11	Outlet	Aluminum
12	Filling plug	PA6
13	Non-return valve	NBR
14	Inlet	Aluminum



### Dimension

Model	DN1	DN2	L (mm)	W (mm)	H (mm)	H1 (mm)
LGP20-B	2"	2"	530	420	425	181
LGP30-B	3"	3"	530	420	425	190.5
LGP20-2B	2"	2"	530	420	425	183
LGP30-2B	3"	3"	530	420	425	190

### Package Information

Model	GW (Kgs)	L (mm)	W (mm)	H (mm)	Quantity (PCS/20 TEU)
LGP20-B	24	545	435	435	245
LGP30-B	25	545	435	435	245
LGP20-2B	25.2	545	435	435	245
LGP30-2B	27.2	545	435	435	245





### Application

- To transfer clean water with liquid temperature between 0°C and 40°C
- Application in water supply and drainage for factories, mines, municipal facilities as well as field irrigation, etc.
- Suitable for longer distance and greater height water transfer

### Features

- New unique design with ergonomic feature
- Portable and compact pump frame
- High quality motor with excellent performance and long service life
- Impeller designed with high efficient hydraulic system
- Low fuel consumption
- LEO engine as default, BS/Honda engine is optional

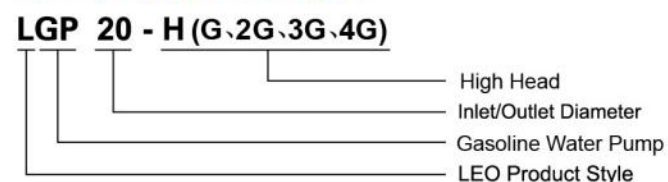
### Pump

- Anti-rust cast iron diffuser
- Max.Suction: 8 m , Suck 5 m needs 120 s
- Inlet/outlet: 50 mm/2 x 38 mm+1 x 50 mm  
38 mm/1 x 38 mm+2 x 25 mm

### Engine

- Single cylinder, 4-stroke, Air-cooled
- Max.power: 6.5 HP
- Rated speed: 3600 rpm
- Reliable engine equipped with low engine oil shut off system

### Identification Codes



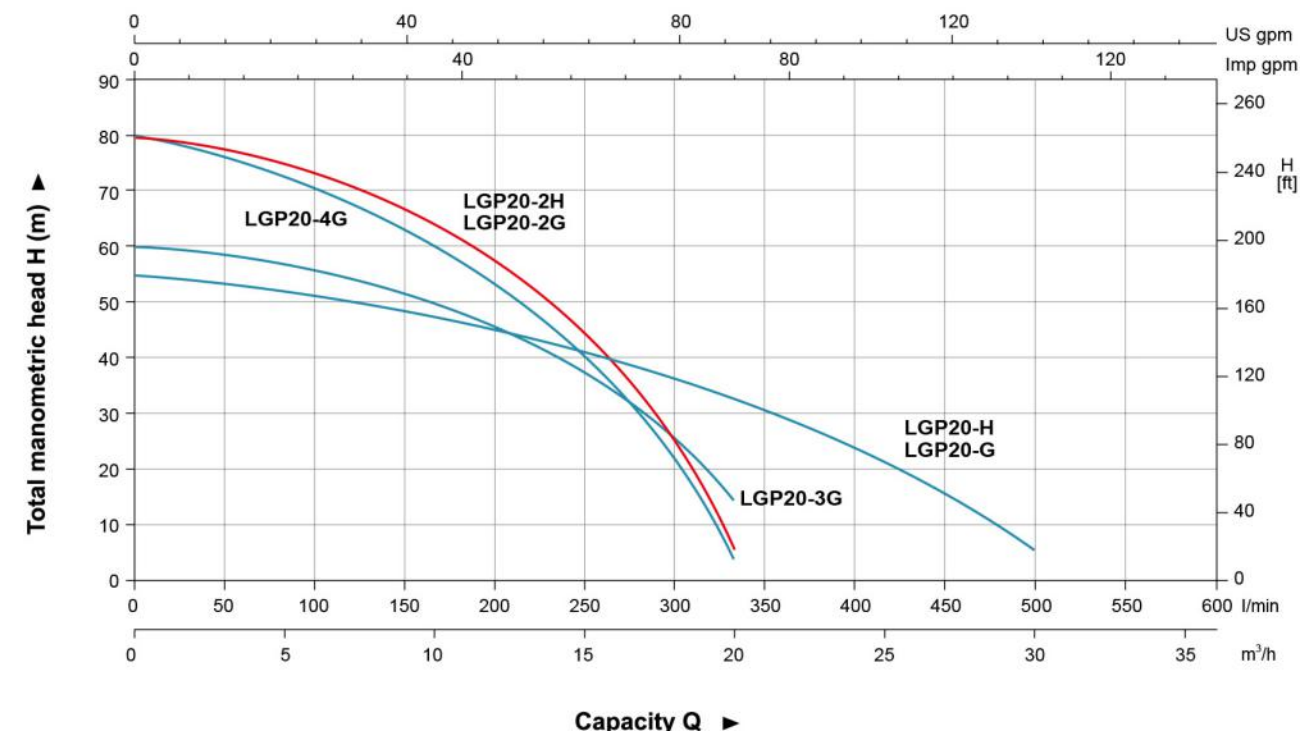
### Technical Data

Model	Power HP	Fuel tank L	Engine Oil L	Displacement cc	Engine	Q (m <sup>3</sup> /h)								
						0	5	10	15	20	25	30		
LGP20-H	6.5	2.8	0.55	196	G200	55	52.4	47.8	40.6	30.4	20	5		
LGP20-G	6.5	2.8	0.58	196	GX200	55	52.4	47.8	40.6	30.4	20	5		
LGP20-2H	6.5	2.8	0.55	196	G200	80	72.5	60	45	5	-	-		
LGP20-2G	6.5	2.8	0.58	196	GX200	80	72.5	60	45	5	-	-		
LGP20-3G	6.5	3.1	0.6	208	XR950	60	55.2	50	42.8	15	-	-		
LGP20-4G	6.5	3.1	0.6	208	XR950	80	77.6	60.7	40	4.4	-	-		

### Dimension

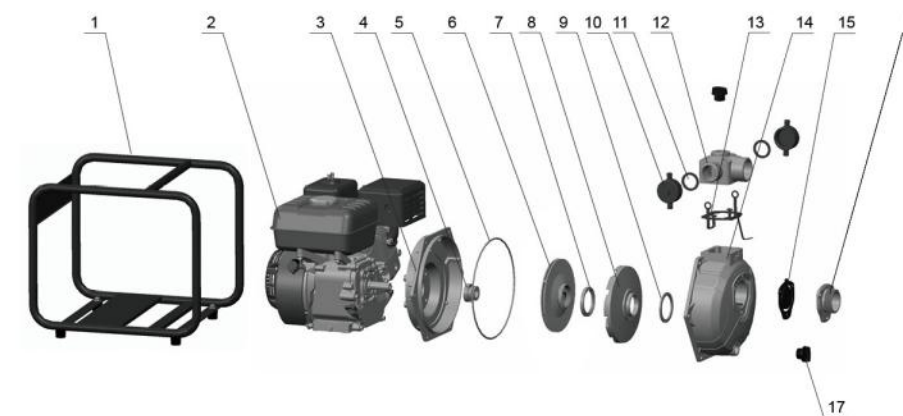
Model	DN1	DN2	2*DN3	L (mm)	W (mm)	H (mm)	H1 (mm)
LGP20-H	2"	2"	1.5"	463	398	406	200
LGP20-G	2"	2"	1.5"	530	420	425	192.2
LGP20-2H	2"	2"	1.5"	463	398	406	200
LGP20-2G	2"	2"	1.5"	530	420	425	192.2
LGP20-3G	2"	2"	1.5"	530	420	425	190
LGP20-4G	2"	2"	1.5"	530	420	425	190

### Hydraulic Performance Curves



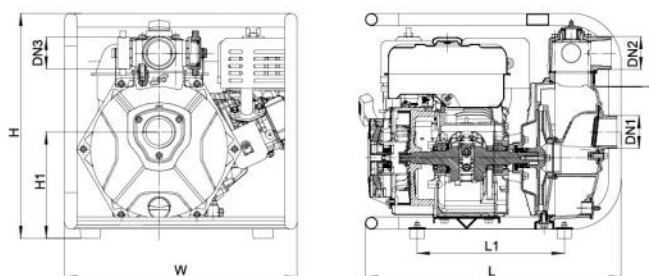
### Materials Table

No.	Part	Material
1	Frame	Steel
2	Engine	
3	Bracket	Aluminum
4	Mechanical seal	Carbon/Ceramic
5	O-ring	NBR
6	Impeller	Aluminum
7	Seal ring	NBR
8	Diffuser	HT200
9	Seal ring	NBR
10	Pipe blanking cap	PP
11	Seal ring	NBR
12	Outlet	Aluminum
13	Gasket	NBR
14	Pump body	Aluminum
15	Non-return valve	NBR
16	Inlet	Aluminum
17	Filling plug	PA6



### Package Information

Model	GW (Kgs)	L (mm)	W (mm)	H (mm)	Quantity (PCS/20 TEU)
LGP20-H	23.22	470	412	432	305
LGP20-G	25.5	545	435	465	196
LGP20-2H	23.24	470	412	432	305
LGP20-2G	27	545	435	465	196
LGP20-3G	27.2	545	435	465	196
LGP20-4G	28.2	545	435	465	196





### Application

- To transfer clean water with liquid temperature between 0°C and 40°C
- Application in water supply and drainage for factories, mines, municipal facilities as well as field irrigation, etc.

### Features

- Strengthened cast-iron pump body ensures more durable and reliable service
- Impeller designed with high efficient hydraulic system
- High quality engine with excellent performance and long service life
- Better sealing effect by using special mechanical seal
- Low fuel consumption

### Pump

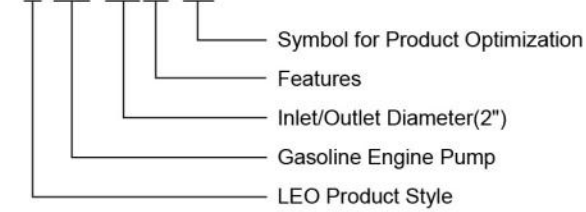
- Anti -rust cast iron pump body
- Aluminum alloy impeller
- Max.Suction: 8 m , Suck 5 m needs 120 s
- Inlet/outlet: 50 mm

### Engine

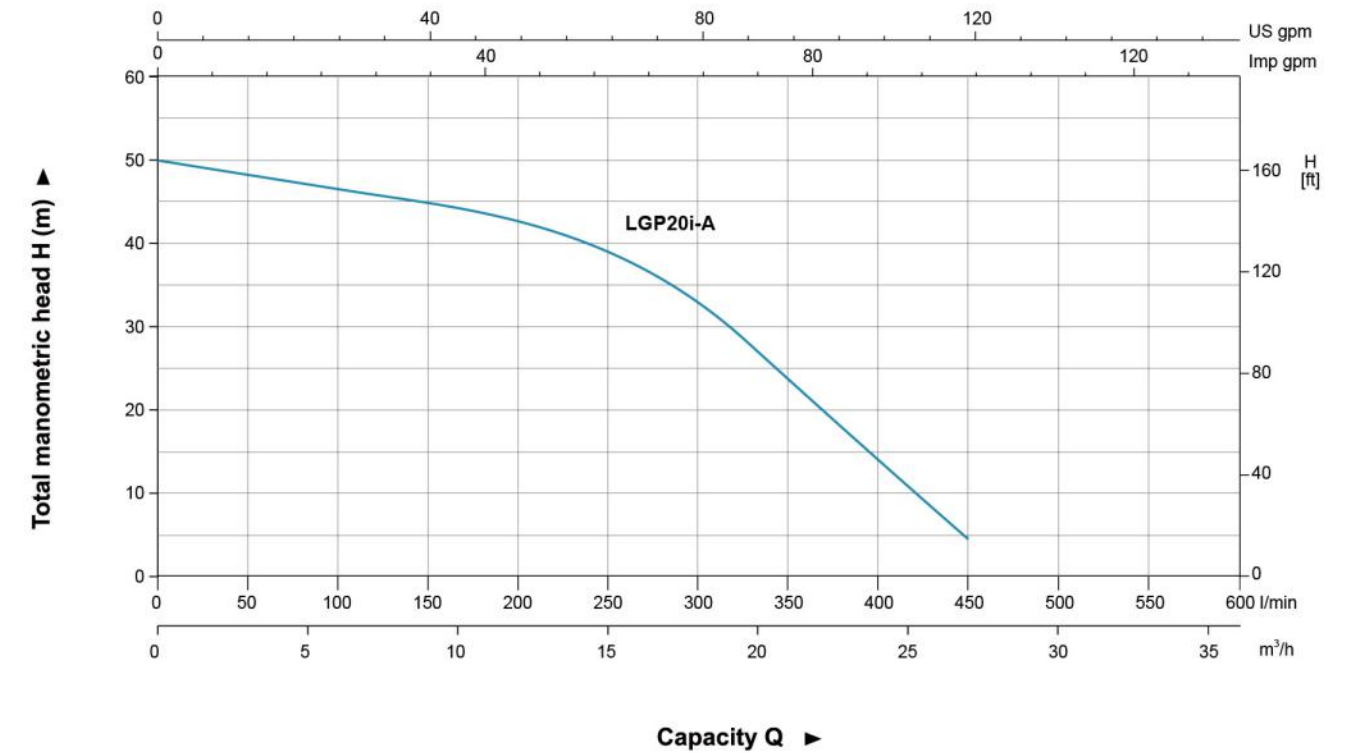
- Single cylinder, 4-stroke, Air-cooled
- Max.power: 6.5 HP
- Rated speed: 3600 rpm
- Reliable engine equipped with low engine oil shut off system

### Identification Codes

**L GP 20 i - A**



### Hydraulic Performance Curves

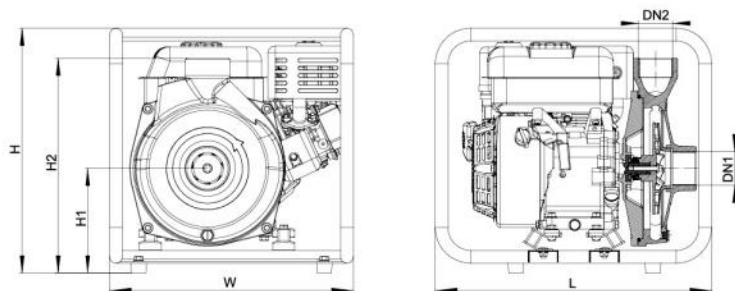
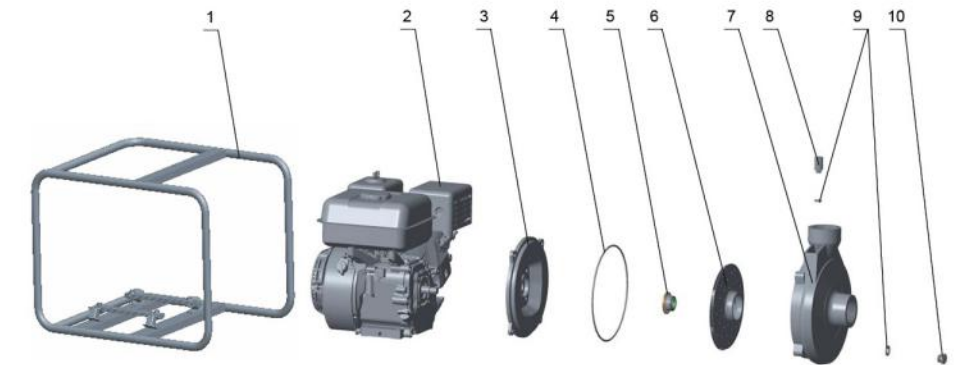


### Technical Data

Model	Power	Fuel tank	Engine Oil	Displacement	Engine	Q (m³/h)							
	HP	L	L	cc		0	5	10	15	20	25	28	
LGP20i-A	6.5	2.8	0.55	196	G200	H (m)	50	48	46	40	28	11.5	5

### Materials Table

No.	Part	Material
1	Frame	Steel
2	Engine	
3	Pump cover	HT200
4	O-ring	NBR
5	Mechanical seal	Carbon/Ceramic
6	Impeller	Aluminum
7	Pump body	HT200
8	Plug	HPb59-1
9	O-ring	NBR
10	Plug	HPb59-1



### Dimension

Model	DN1	DN2	L (mm)	W (mm)	H (mm)	H1 (mm)	H2 (mm)
LGP20i-A	2"	2"	476	420	440	180	370

### Package Information

Model	GW (Kgs)	L (mm)	W (mm)	H (mm)	Quantity (PCS/20 TEU)
LGP20i-A	30	470	433	450	325





### Application

- To transfer clean water or trash water with liquid temperature between 0°C and 40°C
- Application in water supply and drainage for factories, mines, municipal facilities as well as field irrigation, etc.

### Features

- Strengthened aluminium alloy pump body ensures more durable and reliable service
- Original design of the pump body for easy cleanout
- Impeller designed with high efficient hydraulic system
- Honda engine with excellent performance and long service life
- Better sealing effect by using special mechanical seal
- Low fuel consumption
- Honda Engine

### Pump

- Aluminum alloy pump body
- Anti -rust cast iron impeller
- Max. suction: 8 m
- Rated suction: 5 m / 120 s
- Inlet/outlet: 50 mm / 50 mm , 80 mm / 80 mm
- Max.diameter of particle: 22 mm
- Liquid temperature range: 0°C ~ 40°C

### Engine

- Single cylinder,4-stroke, Air-cooled
- Max.power: 9 HP
- Displacement: 163 cc , 270 cc
- Rated speed: 3600 rpm

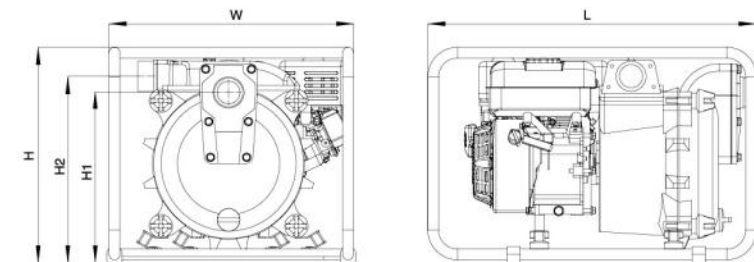
### Identification Codes

#### L GP 20 - T



### Technical Data

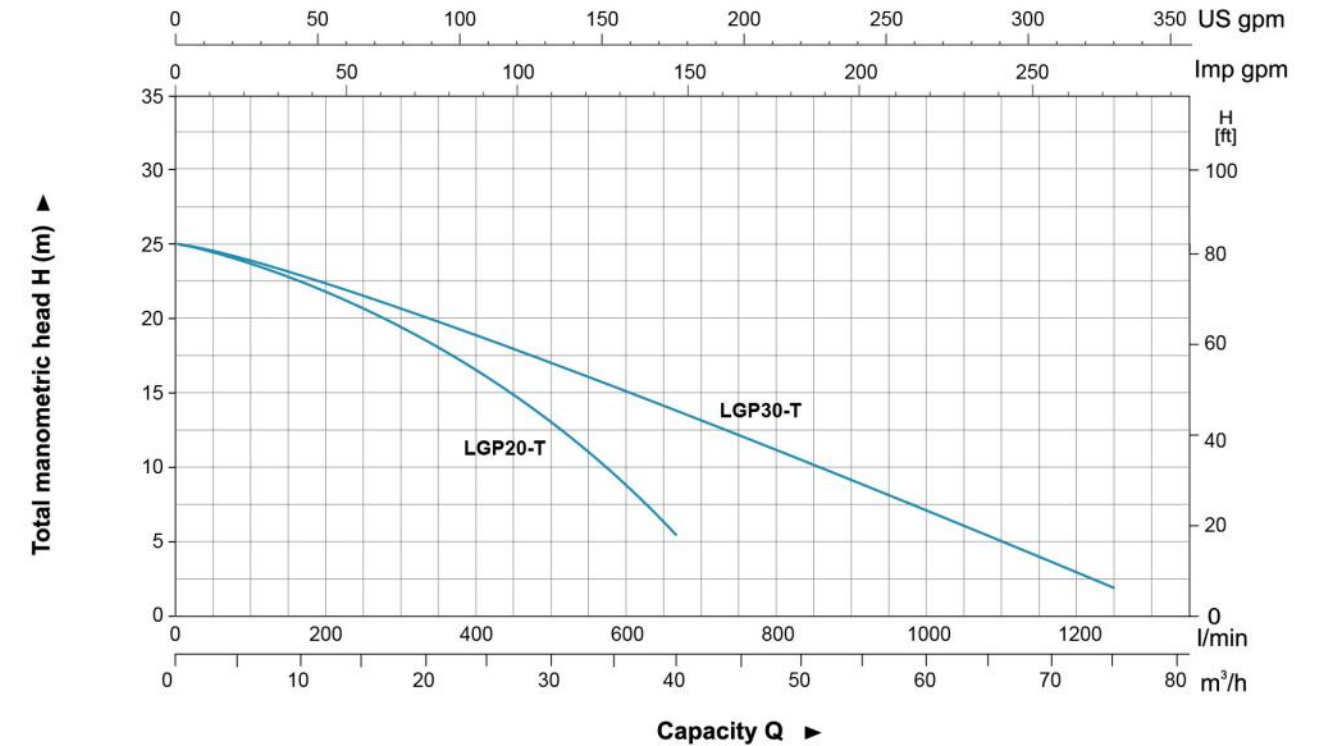
Model	Power HP	Fuel tank L	Engine Oil L	Displacement cc	Engine	Q (m³/h)																
						0	5	10	15	20	25	30	35	40	45	55	65	75				
LGP20-T	5	2.8	0.55	163	GX160	25	24.1	22.5	20.6	18.6	16.1	13.5	10	6	-	-	-	-	-			
LGP30-T	9	3.2	1.1	270	GX270	25	24	23	21	19	18	16	15	14	12	9	6	2	-			



### Dimension

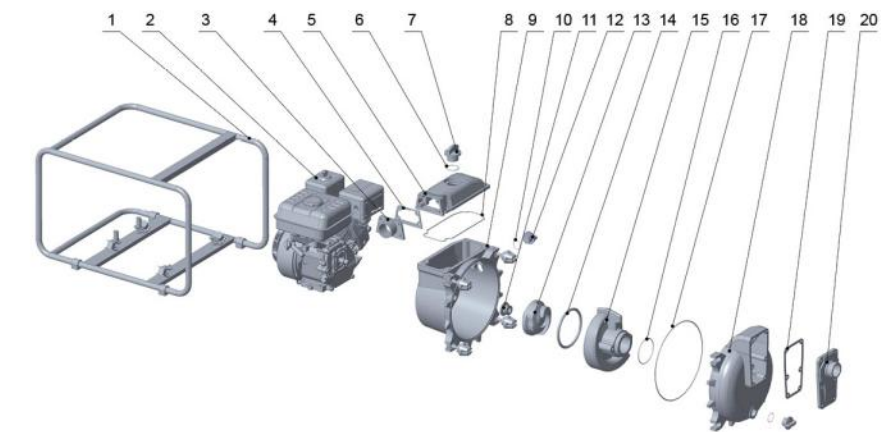
Model	DN1	DN2	L (mm)	W (mm)	H (mm)	H1 (mm)	H2 (mm)
LGP20-T	2"	2"	675	502	446	350	385
LGP30-T	3"	3"	715	502	532.5	380	415

### Hydraulic Performance Curves



### Materials Table

No.	Part	Material
1	Frame	Steel
2	Engine	
3	Outlet	Aluminum
4	Seal	NBR
5	Outlet cover	Aluminum
6	O-ring	NBR
7	Plug	
8	O-ring	NBR
9	Pump cover	Aluminum
10	O-ring	NBR
11	Mechanical seal	
12	Plug	
13	Impeller	HT200
14	O-ring	NBR
15	Diffuser	HT200
16	O-ring	NBR
17	O-ring	NBR
18	Pump body	Aluminum
19	Seal	
20	Inlet	Aluminum



### Package Information

Model	GW (Kgs)	L (mm)	W (mm)	H (mm)
LGP20-T	48.8	675	502	446
LGP30-T	63	745	542	582





### Application

- Can be used to transfer slurry, liquids that containing mud, sand, small rocks and other debris diameter less than 22mm.
- Sewage treatment for civil engineering, mines, quarries and municipal facilities, etc.
- Water supply and drainage for factories,mins,municipal facilities as well as field irrigation, etc.

### Features

- All new design with ergonomic feature
- Reliable 4-stroke gasoline engine with low fuel consumption and high quality crankshaft
- Portable, durable and compact pump frame
- Durable sealing system with special mechanical seal
- Silicon carbide mechanical seal for increased abrasive resistance, longer life and less maintainance
- Pump body can easily disassembled and assembled for cleaning out debris, or pump repair

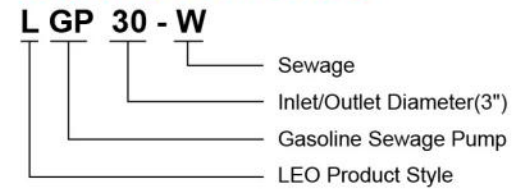
### Pump

- Anti-rust cast iron impeller and diffuser
- Max.Suction: 8 m, Suck 5 m needs 120 s
- Inlet/outlet: 3"
- Max. diameter of particle: 22 mm
- Liquid temperature range: 0°C ~ 40°C

### Engine

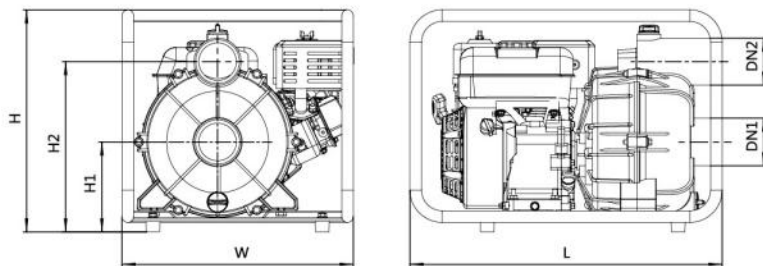
- Single cylinder, 4-stroke, Air-cooled
- Max.power: 6.5 HP
- Rated speed: 3600 rpm
- Reliable engine equipped with low engine oil shut off system

### Identification Codes



### Technical Data

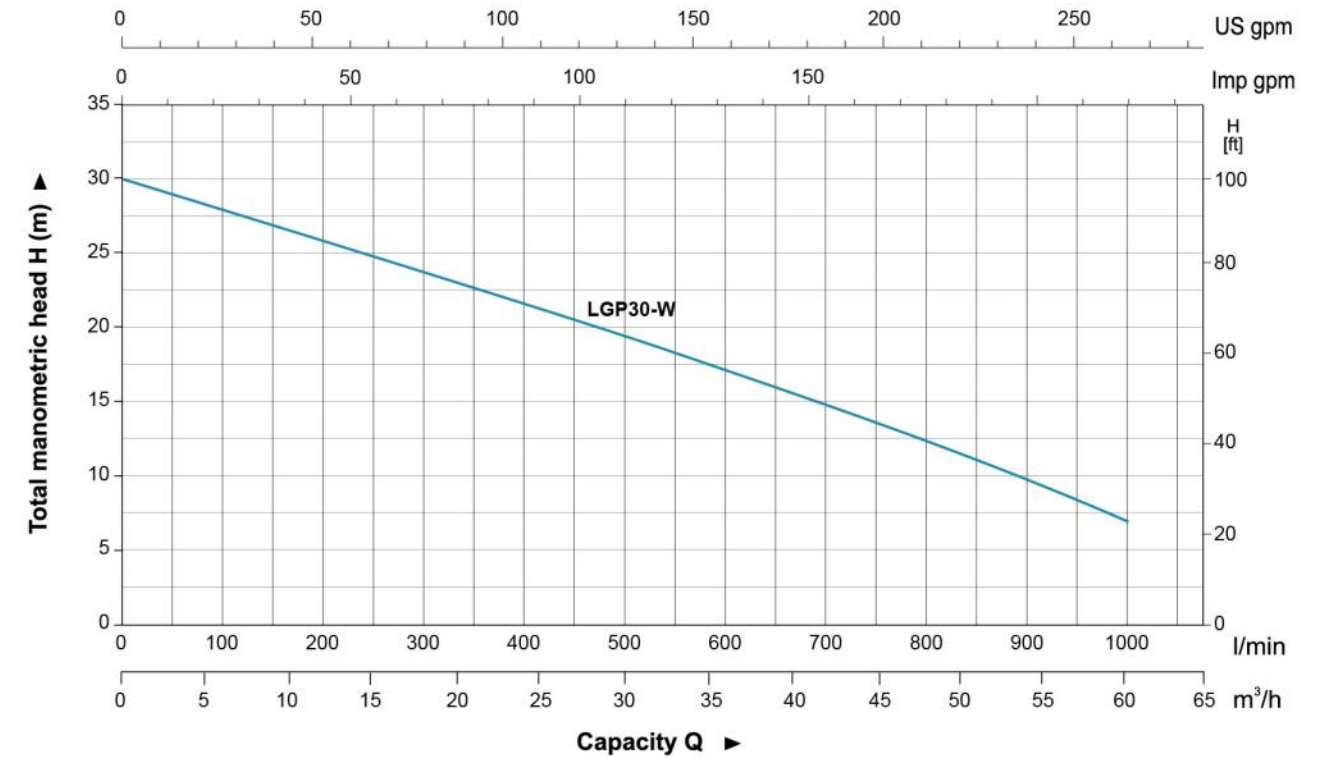
Model	Power HP	Fuel tank L	Engine Oil L	Displacement cc	Engine	Q (m <sup>3</sup> /h)															
						0	5	10	15	20	25	30	35	40	45	50	55	60			
LGP30-W	6.5	2.8	0.55	196	G200	<b>H(m)</b>	30	27	25.5	24	22	20.5	18.5	17	15.5	14.5	11.5	9.2	7		
						<b>Q (l/min)</b>	0	83.3	166.7	250	333.3	416.7	500	583.3	666.7	750	833.3	916.7	1000		



### Dimension

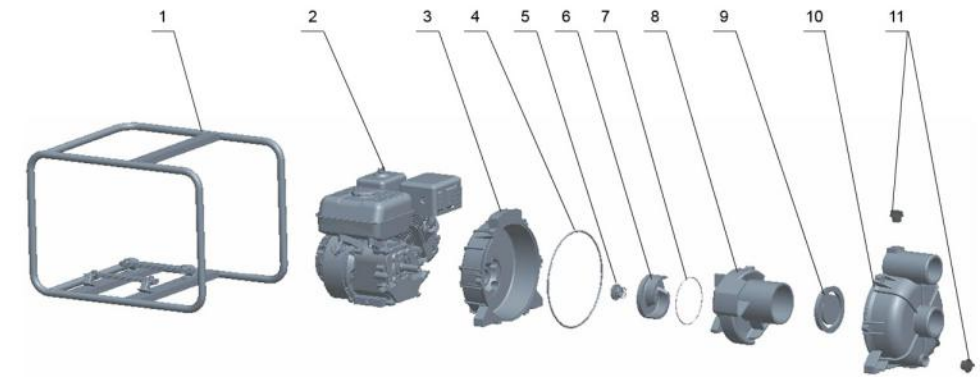
Model	DN1	DN2	L (mm)	W (mm)	H (mm)	H1 (mm)	H2 (mm)
LGP30-W	3"	3"	590	437	431	195	347

### Hydraulic Performance Curves



### Materials Table

No.	Part	Material
1	Frame	Steel
2	Engine	
3	Pump cover	Aluminum
4	O-ring	NBR
5	Mechanical seal	Silicon carbide /Silicon carbide
6	Impeller	HT200
7	O-ring	NBR
8	Diffuser	HT200
9	Non-return valve	NBR
10	Pump body	Aluminum
11	Plug	ABS



### Package Information

Model	GW (Kgs)	L (mm)	W (mm)	H (mm)	Quantity (PCS/20 TEU)
LGP30-W	34.6	605	450	459	168





### Application

- To transfer clean water with liquid temperature between 0°C and 40°C
- Application in water supply and drainage for factories, mines, municipal facilities as well as field irrigation, etc.

### Features

- All new design with ergonomic feature
- High lift series with LEO high efficient hydraulic system
- Reliable 4-stroke diesel engine with low fuel consumption and high quality crankshaft
- Portable, durable and compact pump frame
- Durable sealing system with special mechanical seal
- Optional outlet selection

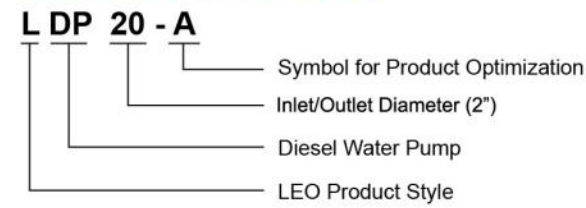
### Pump

- Anti-rust cast iron impeller and diffuser
- Max.Suction: 8 m , Suck 5 m needs 120 s
- Inlet/outlet: 2"/3"

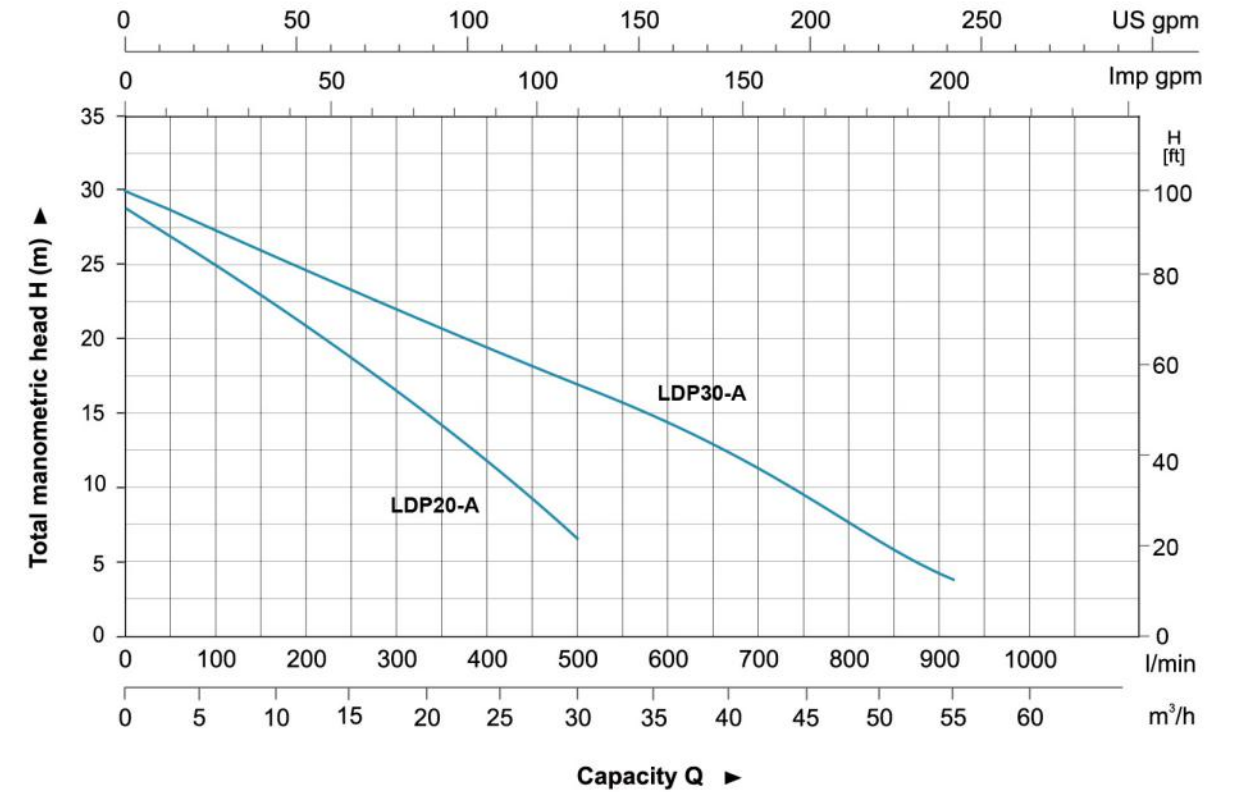
### Engine

- Single cylinder,4-stroke,Air-cooled
- Max.power: 3.8 HP
- Rated speed: 3600 rpm
- Reliable engine equipped with low engine oil shut off system

### Identification Codes



### Hydraulic Performance Curves

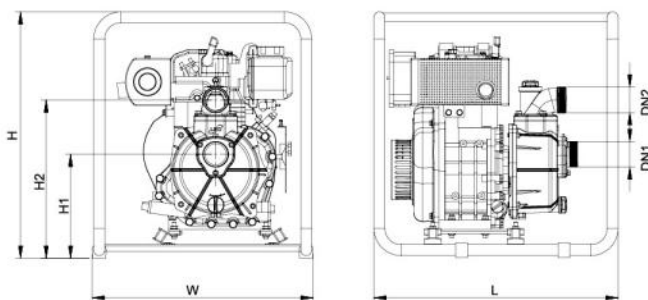
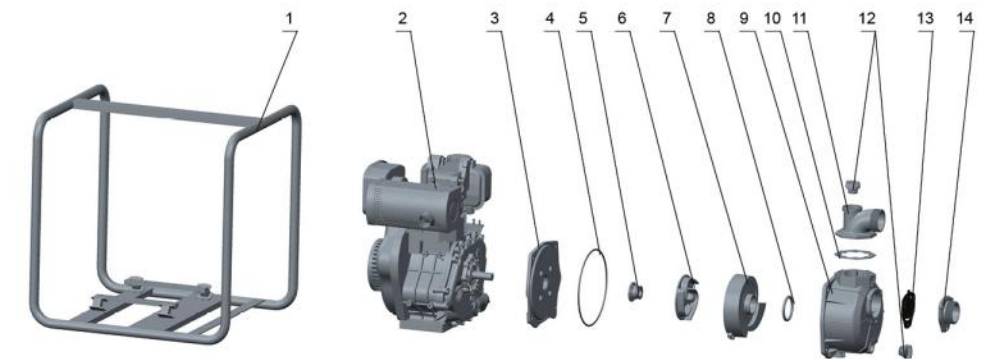


### Technical Data

Model	Power HP	Fuel tank L	Engine Oil L	Displacement cc	Engine D170	Q (m³/h)											
						0	5	10	15	20	25	30	35	40	45	50	55
LDP20-A	3.8	2.5	0.8	219	D170	0	83.3	166.7	250	333.3	416.7	500	583.3	666.7	750	833.3	916.7
LDP30-A	3.8	2.5	0.8	219	D170	30	27	26.5	24.1	21.4	19.3	16.7	15.8	13.5	11	8	4.8

### Materials Table

No.	Part	Material
1	Frame	Steel
2	Engine	
3	Pump cover	Aluminum
4	O-ring	NBR
5	Mechanical seal	Carbon/Ceramic
6	Impeller	HT200
7	Diffuser	HT200
8	O-ring	NBR
9	Pump body	Aluminum
10	Seal	NBR
11	Outlet	Aluminum
12	Plug	ABS
13	Non-return valve	NBR
14	Inlet	Aluminum



### Dimension

Model	DN1	DN2	L (mm)	W (mm)	H (mm)	H1 (mm)	H2 (mm)
LDP20-A	2"	2"	470	427	536	225	335
LDP30-A	3"	3"	470	427	536	240	390

### Package Information

Model	GW (Kgs)	L (mm)	W (mm)	H (mm)	Quantity (PCS/20 TEU)
LDP20-A	35.1	485	435	550	244
LDP30-A	36.2	485	435	550	244





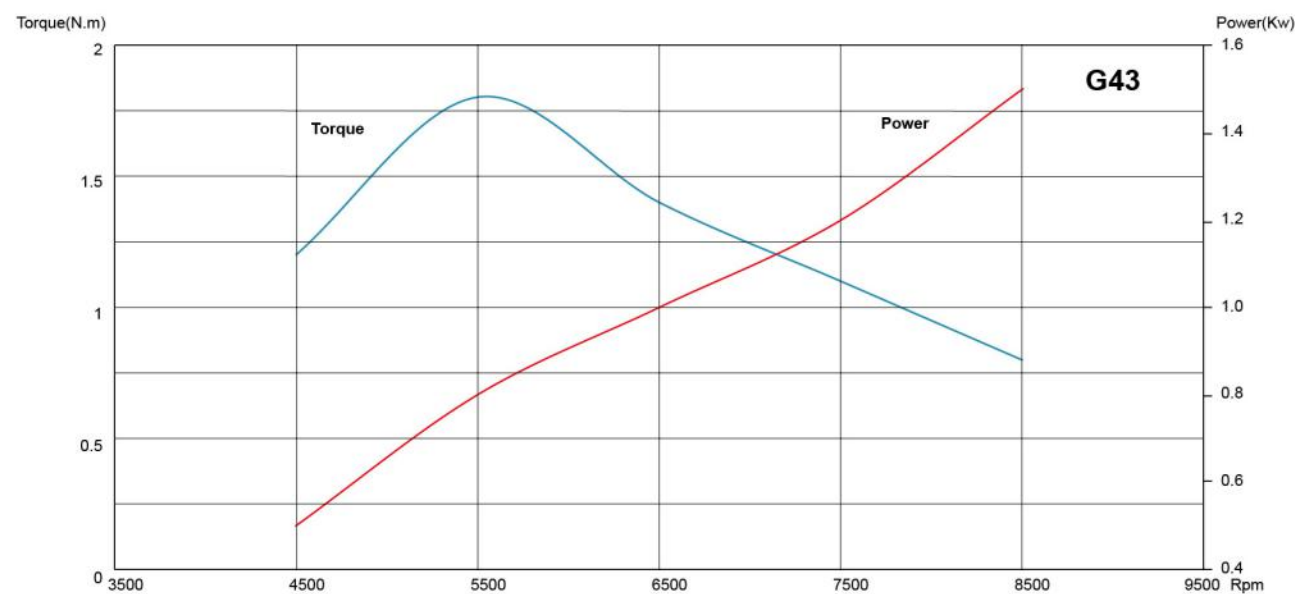

### Features

- High fuel efficiency and high output operation
- Smooth performance
- Especially quiet
- Reliable
- Easy to use and maintain
- Easy starting
- Emission compliant
- Available options

### Technical Data

- Model name: G43
- Engine Type: Single Cylinder, Air-cooled, 2-Stroke,
- Displacement: 42.7 cc
- Rated Power : 1.2 Kw / 7500 rpm
- Max. Torque: 1.8 N.m / 5500 rpm
- Cylinder: Aluminium
- Bore× Stroke: 40x34 mm
- Fuel Tank Capacity: 1 L
- Compression Ratio: 7.5 : 1
- Start Type: Pull
- Certical: EUII
- PTO Shaft Rotation: Counterclockwise (From PTO shaft side)
- Carburetor: Buttery
- Lubrication System: Splash
- Governor System: Centrifugal Mass Type
- Air Cleaner: Dual Element
- Dimensions(L×W×H): 260x255.4x177.5 mm
- Dry Weight: 4 KG

### Torque Tachometer



### Features

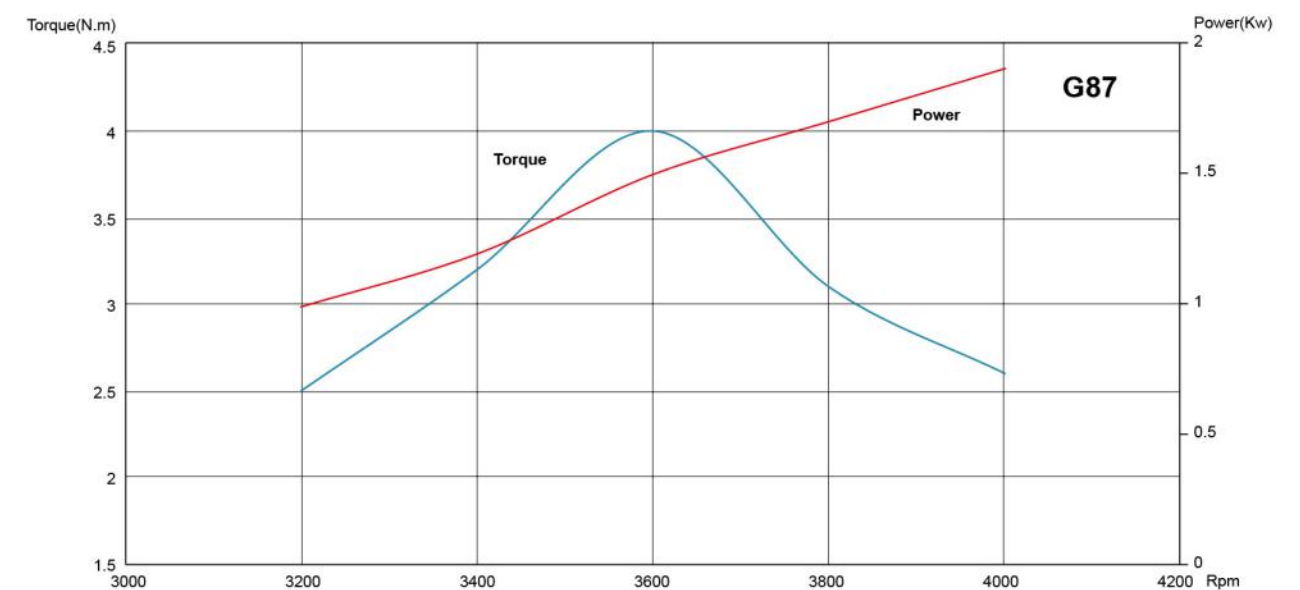
- High fuel efficiency and high output operation
- Smooth performance
- Especially quiet
- Reliable
- Easy to use and maintain
- Easy starting
- Emission compliant
- Available options

### Technical Data

- Model name: G87
- Engine Type: Single Cylinder, Air-cooled, 4-Stroke, OHV
- Displacement: 87 cc
- Rated Power: 1.5 Kw / 3600 rpm
- Max. Torque: 4 N.m / 3600 rpm
- Cylinder: Aluminium
- Bore× Stroke: 54x38 mm
- Fuel Tank Capacity: 1.8 L
- Oil Capacity: 350 mL
- Compression Ratio: 8.0 : 1
- Start Type: Pull
- Certical: EUII
- PTO Shaft Rotation: Counterclockwise (From PTO shaft side)
- Carburetor: Buttery
- Lubrication System: Splash
- Governor System: Centrifugal Mass Type
- Air Cleaner: Dual Element
- Dimensions(L×W×H): 318.6x246.8x294.6 mm
- Dry Weight: 10.5 KG



### Torque Tachometer





**Features**

- High fuel efficiency and high output operation
- Smooth performance
- Especially quiet
- Reliable
- Easy to use and maintain
- Easy starting
- Emission compliant
- Available options

**Technical Data**

- Model name: G200
- Engine Type: Single Cylinder, Air-cooled, 4-Stroke, OHV
- Displacement: 196 cc
- Rated Power: 3.7 Kw / 3600 rpm
- Max. Torque: 11.5 N.m / 2800 rpm
- Cylinder: Aluminium
- Bore x Stroke: 68x54 mm
- Fuel Tank Capacity: 2.8 L
- Oil Capacity: 0.55 L
- Compression Ratio: 8.5 : 1
- Start Type: Pull
- Certical: EUII, EUV
- PTO Shaft Rotation: Counterclockwise (From PTO shaft side)
- Carburetor: Buttery
- Lubrication System: Splash
- Governor System: Centrifugal Mass Type
- Air Cleaner: Dual Element
- Dimensions(LxWxH): 355x310x337 mm
- Dry Weight: 16.5 KG

**MEMO**

---

---

---

---

---

---

---

---

---

---

---

---

---

---

---

---

---

---

---

---

---

---

---

---

---

**Torque Tachometer**

